

Karndean



VAN GOGH
Our new designs

PAVING THE WAY

in style and innovation

We've evolved our popular Van Gogh collection with exclusive stone designs, timeless 457mm x 114mm herringbone designs and chevron laying patterns.

Providing design and installation flexibility, new for this year, Van Gogh now has a selection of stone options added to its historically wood-only dual format portfolio. These new additions offer specifiers the option to blend both wood and stone designs to create unique laying patterns reflective of the building's origins, or subtle directional aids used to navigate occupants throughout large, open-plan spaces. With a palette of neutral and brushed oaks, and the introduction of Italian marbles and Spanish slates, this enhanced collection provides more choice than ever before.



Antique French Oak **SM-VGW8110** | Canadian Nude Oak **SM-VGW8117**
Glenmore Oak **SM-VGW8237**



Venetian Slate **VGT2423**

DESIGN IS AN ENDLESS JOURNEY

Every new or enhanced collection we create tells its own unique story, reflecting the journey our own designers took when searching for the inspiration that has ultimately shaped our products. Each grain of wood, or the varying textures found in different stones, have a uniqueness that we try to emulate. Whilst all our designs have been handcrafted to reflect every minute detail, a selection of wood looks feature a natural grain emboss, further accentuating the organic aesthetics that inspired it.

It's nature that both influences and motivates us to create designs that capture these unique intricacies, harnessing their beauty and pouring this into every plank and tile.



Palazzo Marble **VGT2413**

Spotlight on: Palazzo Marble

Recognised for its striking beauty and links to Michelangelo's masterpieces, Calacatta marble has been the source of inspiration for our new Palazzo Marble.

Originating from the Apuan Alps near Carrara in Italy, Calacatta is whiter than most marbles, giving it a polished look that intensifies its elegance. Characterised by its warm white backdrop and dramatic, unstructured grey veining, it stands out from the other marbles in the region.

To ensure the accurate recreation of this luxurious and highly sought after marble, our design team have been working on Palazzo Marble for over a year, and in doing so, have created a design that accurately and sympathetically reflects the beauty and quality of the original source.

NATURAL FINISHES

to inspire your design journey

With unique wood and stone designs in a choice of format and tile size options, you'll be spoilt for choice with our revitalised and expanded Van Gogh collection.

Discover new designs that ooze authentic detail and elegance and explore endless opportunities to create personalised bespoke floors.

Design interesting laying patterns that guide wayfinding or use unexpected combinations of wood and stone designs to express individuality.

Design is a journey. Join us as we imagine unique floor designs that reflect the beauty of the natural world and inspire others to find new heights of creativity.



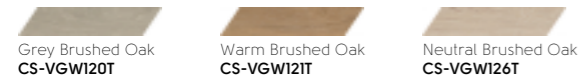
Canadian Urban Oak **SM-VGW8116**
Palazzo Marble **SM-VGT2413**



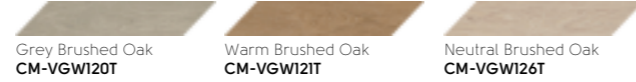
Antique French Oak **SM-VGW8110** | Canadian Nude Oak **SM-VGW8117** | Glenmore Oak **SM-VGW8237** | Mixed herringbone

WOOD DESIGNS

Gluedown: 430.0mm x 90.0mm (16.93" x 3.54")



Gluedown: 600.0mm x 120.0mm (23.62" x 4.72")



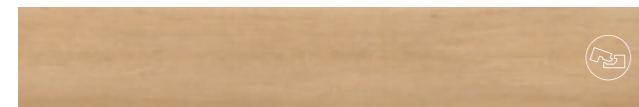
Gluedown: 1422.4mm x 228.6mm | Rigid core: 1420.0mm x 225.0mm (56.0" x 9.0" | 55.91" x 8.86")



Neutral Brushed Oak **VGW126T**



Baltic Washed Oak **VGW8101 | RKP8101**



Warm Ash **VGW8103 | RKP8103**



Washed Grey Ash **VGW8104 | RKP8104**



Texas White Ash **VGW8105 | RKP8105**



Smoked Butternut **VGW8107 | RKP8107**



Antique French Oak **VGW8110 | RKP8110**



Baltic Lined Oak **VGW8111 | RKP8111**



Baltic Mistral Oak **VGW8112 | RKP8112**



English Character Oak **VGW8115 | RKP8115**



Canadian Urban Oak **VGW8116 | RKP8116**



Canadian Nude Oak **VGW8117 | RKP8117**



Texas Grey Ash **VGW8239**



Croftmore Oak **VGW8240**




Hayfield Oak **VGW8241**



Aviemore Oak **VGW8242**



Glenmore Oak **VGW8237**

 Also available in rigid core

Gluedown: 711.2mm x 177.8mm (28.0" x 7.0") | Rigid core (-RKP): 708.0mm x 177.0mm (27.87" x 6.97")



Canadian Urban Oak **SM-VGW8116 | SM-VGW8116-RKP**



Neutral Brushed Oak **SM-VGW126T**



Texas White Ash **SM-VGW8105 | SM-VGW8105-RKP**



Texas Grey Ash **SM-VGW8239**

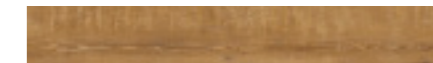
Gluedown: 1219.2mm x 177.8mm (48.0" x 7.0") | Rigid core (-SCB): 1220.0mm x 180.0mm (48.03" x 7.09")



Auckland Oak **VGW52T | VGW52T-SCB**



Blond Farmhouse Oak **VGW136T**



Natural School Cedar **VGW142T**



Light Distressed Oak **VGW111T | VGW111T-SCB**



Silver Farmhouse Oak **VGW137T**



Light Country Oak **VGW139T | VGW139T-SCB**



Smoked School Cedar **VGW138T**



Bianco Breccia Marble **VGT3021** | Aviemore Oak **VGW8242**

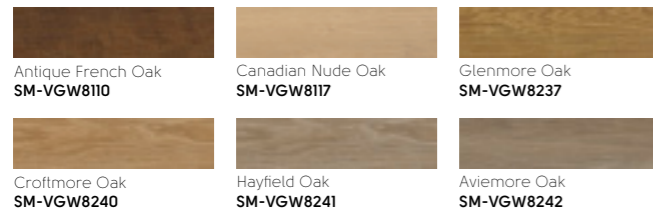
NEW WOOD DESIGNS

We are thrilled to introduce six exquisite herringbone designs, each meticulously crafted to redefine your space.

Inspired by the classic herringbone pattern, these designs seamlessly blend traditional charm with contemporary style.

Each herringbone plank measures 457mm x 114mm, offering a versatile size that suits any commercial spaces.

Gluedown: 457.2mm x 114.3mm (18.0" x 4.5")



Hayfield Oak SM-VGW8241

Choosing your laying pattern

From classic to contemporary finishes, explore the art of herringbone laying patterns to achieve the right finish for your space.



Canadian Nude Oak SM-VGW8117 | Double herringbone



Antique French Oak **SM-VGW8110** | Canadian Nude Oak **SM-VGW8117** | Glenmore Oak **SM-VGW8237** | Mixed herringbone



Glenmore Oak **SM-VGW8237**

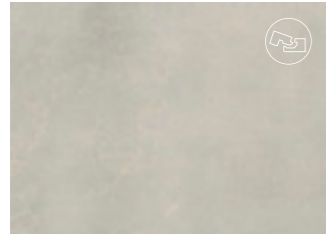
STONE DESIGNS

Gluedown: 177.8mm x 711.2mm (7.0" x 28.0")

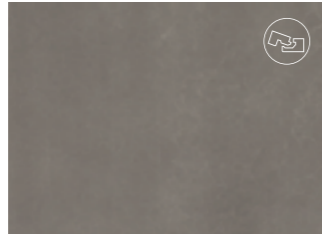


Palazzo Marble **SM-VGT2413**

Gluedown: 457.2mm x 609.6mm (18.0" x 24.0") | Rigid core: 457.0mm x 600.0mm (17.99" x 23.62")



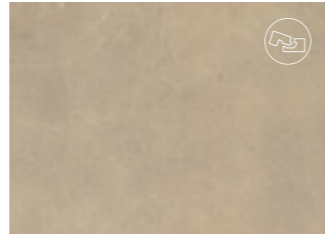
Frosted Stone **VGT2401 | RKT2401**



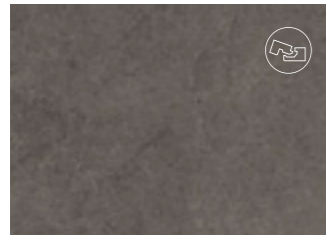
Urban Grey **VGT2402 | RKT2402**



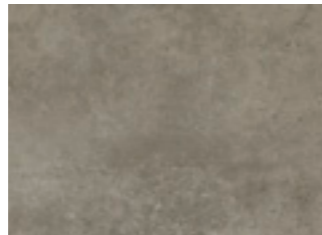
Metro Grey **VGT2403 | RKT2403**



Cotswold Stone **VGT2405 | RKT2405**



Volcanic Black **VGT2406 | RKT2406**



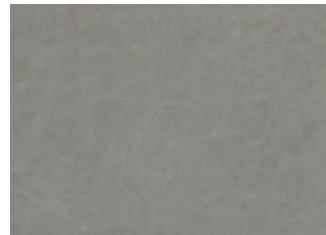
Pebble Grey **VGT2410**



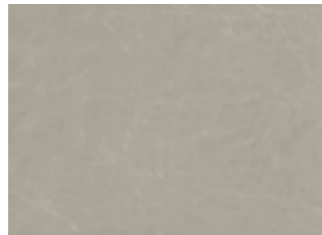
Palazzo Marble **VGT2413**



Bronze Castello Marble **VGT2416**



Grey Castello Marble **VGT2417**



Dove Castello Marble **VGT2418**



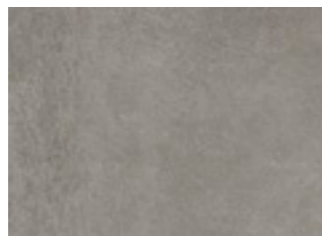
Graphite Castello Marble **VGT2419**



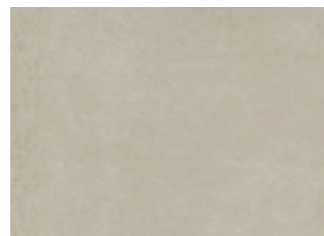
Milanese Slate **VGT2420**




Tuscan Slate **VGT2421**



Roman Slate **VGT2422**



Venetian Slate **VGT2423**

 Also available in rigid core

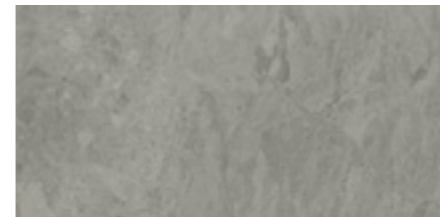
Gluedown: 457.2mm x 914.4mm (18.0" x 36.0")



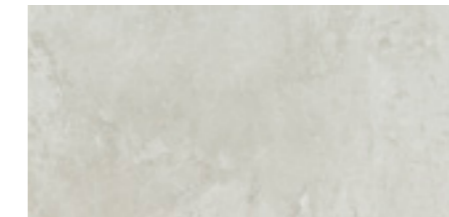
Tortora Breccia Marble **VGT3018**



Luna Breccia Marble **VGT3020**



Grigio Breccia Marble **VGT3019**



Bianco Breccia Marble **VGT3021**



Grigio Breccia Marble **VGT3019**



Aviemore Oak **VGW8242** | Milanese Slate **VGT2420** | Luna Breccia Marble **VGT3020**

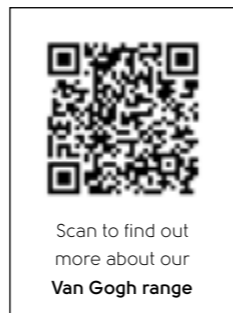
Van Gogh gluedown technical specification



	Standard	Gluedown
Size	EN ISO 24342	711.2 mm x 177.8 mm 1219.2 mm x 177.8 mm 1422.4 mm x 228.6 mm 600.0 mm x 120.0 mm 430.0 mm x 90.0 mm 457.2 mm x 609.6 mm (stone) 457.2 mm x 914.4 mm (stone) 457.2 mm x 114.3 mm 177.8 mm x 711.2 mm (stone)
Thickness	EN ISO 24346	3.0 mm
Wear layer	EN ISO 24340	0.55 mm
Surface treatment		K-Guard+® PU coating
Guarantee¹	Light industrial Commercial Residential	15 years 15 years Lifetime guarantee
Bevelled edge		Micro
Mass per unit area	EN ISO 23997	5187 g/m ²
Standards	EN 649 / EN ISO 10582	Pass
Classification	EN 685 / EN ISO 10874 - Light industrial EN 685 / EN ISO 10874 - Commercial EN 685 / EN ISO 10874 - Domestic	42: Light industrial general 33: Commercial heavy 23: Domestic heavy
Reaction to fire	EN 13501-1	B _{fl} -s1
Staining resistance	EN ISO 26987 / EN 423	Excellent
Light fastness	EN ISO 105-B02	Pass (≥7)
Abrasion resistance	EN 660-2 EN ISO 10582	Group T Type 1
Flexibility	EN ISO 24344	Pass
Dimensional stability	EN 434 / EN ISO 23999	Pass (<0.25%)
Acoustic impact noise reduction	EN ISO 717-2 / EN ISO 140-8	ΔL _w = 4 dB
Electrical behaviour body voltage	EN 1815	Pass
Indentation - residual	EN 433 / EN ISO 24343-1	Pass (<0.1 mm)
Castor chair continuous use	EN 425 / ISO 4918	Pass
Thermal resistance	ISO 8302	0.0118 m ² K/W Suitable for underfloor heating. Max 27°C
Slip resistance²	EN 13893 DIN 51130	DS R10
Light Reflectance Value (LRV)	BS 8493:2008+A1:2010	Please refer to QR code at the bottom of the page
Adhesive	Karndean Universal Silane Pressure Sensitive	Yes Yes Yes
Environmental	Indoor Air Comfort Floorscore SCS-EC10.3-2014 v4.0 Environmental Product Declaration NSF / ANSI 332 ISO 14001 / ISO 9001	Gold certification; Compliant low emitting VOC emissions. Indoor air quality certified; Compliant low emitting VOC emissions. External third-party verified Type III EPD. Sustainability Assessment for Resilient Floor Coverings; Silver certified product Manufactured to quality and environment management systems standard.
Recycling		Suitable
Phthalate free		Yes

¹ Subject to terms. Please see our website.

² Slip resistance is measured on freestanding ex-factory product. Slip resistance can be affected by many factors, including but not limited to; product installation and underlayment, surface contamination, use, wear and how the product is maintained. Textural variation along the surface of the product can affect nominal values.

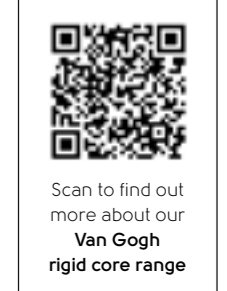
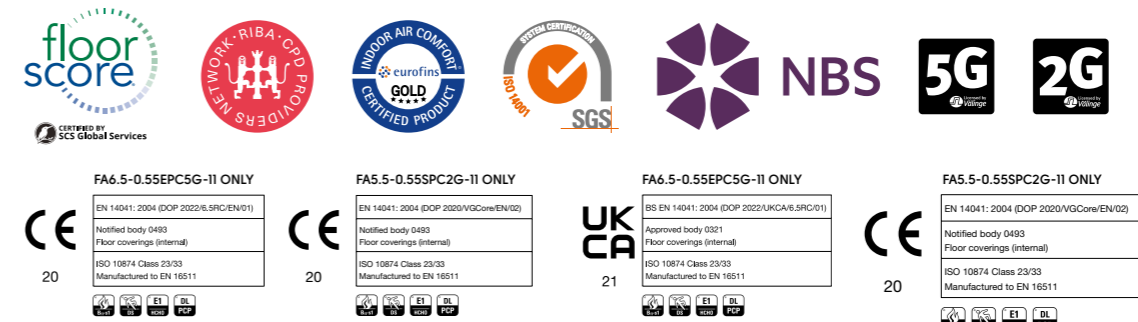


Van Gogh rigid core technical specification



	Standard	Rigid Core 5G*	Rigid Core 2G™
Size	EN ISO 24342	1420.0 mm x 225.0 mm 457.0 mm x 600.0 mm (stone)	1220.0 mm x 180.0 mm 708.0 mm x 177.0 mm
Thickness	EN ISO 24346	6.5 mm	5.5 mm
Wear layer	EN ISO 24340	0.55 mm	0.55 mm
Locking mechanism		5G® fold down installation system ^{1,2}	2G™ angling installation system ¹
Surface treatment		K-Guard+® PU coating	K-Guard+® PU coating
Guarantee³	Commercial Residential	15 years Lifetime guarantee	15 years Lifetime guarantee
Bevelled edge		Micro	Micro
Mass per unit area	EN ISO 23997	7480 g/m ²	9037 g/m ²
Standards	EN 16511	Pass (Multilayer modular floorcovering panels)	Pass (Multilayer modular floorcovering panels)
Classification	ISO 10874 - Commercial ISO 10874 - Domestic	33: Commercial heavy 23: Domestic heavy	33: Commercial heavy 23: Domestic heavy
Reaction to fire	EN 13501-1	B _{fl} -s1	B _{fl} -s1
Staining resistance	EN 438-2	Pass (Grade 5)	Pass (Grade 5)
Light fastness	EN ISO 105-B02	Pass (≥6)	Pass (≥6)
Abrasion resistance	EN 13329 Annex E	Pass (>4000 cycles)	Pass (>4000 cycles)
Furniture chair leg	EN 424	Pass (No visible damage)	Pass (No visible damage)
Dimensional stability	BS EN ISO 23999	Pass (<0.25%)	Pass (<0.25%)
Swelling	ISO 24336	Pass (0.2%)	Pass (0.7%)
Acoustic impact noise reduction	EN ISO 10140-1:2016	ΔL _w = 21 dB	ΔL _w = 19dB
Indentation - residual	ISO 24343-1	Pass (<0.1 mm)	Pass (<0.1 mm)
Impact resistance	EN 13329 Annex F	Pass (≥1800 mm)	Pass (≥1600 mm)
Castor chair continuous use	EN 425 / ISO 4918	Pass (25,000 cycles)	Pass (25,000 cycles)
Thermal resistance	ISO 8302	0.0515 m ² K/W Suitable for underfloor heating. Max 27°C	0.0338 m ² K/W Suitable for underfloor heating. Max 27°C
Slip resistance⁴	EN 13893 DIN 51130	DS R10	DS R10
Light Reflectance Value (LRV)	BS 8493:2008+A1:2010	Please refer to QR code at the bottom of the page	
Adhesive		None required, please install according to our installation instructions.	
Environmental	Indoor Air Comfort Floorscore SCS-EC10.3-2014 v4.0 ISO 14001 / ISO 9001	Gold certification; Compliant low emitting VOC emissions. Indoor air quality certified; Compliant low emitting VOC emissions.	Gold certification; Compliant low emitting VOC emissions. Indoor air quality certified; Compliant low emitting VOC emissions.
Recycling		Suitable	Suitable
Phthalate free		Yes	Yes

¹ 5G® and 2G™ are patented technologies invented by Välinge Innovation AB. The 5G® and 2G™ word marks and logos are registered trademarks owned by Välinge Innovation AB and any use of such marks is under license.
² 5G® short edge; 2G™ long edge except SM-VGW120T-RKP, SM-VGW121T-RKP, SM-VGW122T-RKP, SM-VGW123T-RKP, SM-VGW8105-RKP, SM-VGW8116-RKP which are modified 2G™ on short edge and standard 2G™ on long edge.
³ Subject to terms. Please see our website.
⁴ Slip resistance is measured on freestanding ex-factory product. Slip resistance can be affected by many factors, including but not limited to; product installation and underlayment, surface contamination, use, wear and how the product is maintained. Textural variation along the surface of the product can affect nominal values.





Roman Slate VGT2422 | Tortora Breccia Marble VGT3018



Karndean

 **Karndean
Designflooring**

Karndean Designflooring - Commercial
Call: 0044 (0)1386 820104
Email: commercial@karndean.co.uk
For ROI call: 01 6569887
KD8018UK | COMMLEAFVG2

This page: Aviemore Oak **SM-VGW8242**
Front cover: Canadian Nude Oak **SM-VGW8117**



t. 01386 820104 www.karndean.com

Karndean Designflooring, Crab Apple Way,
Vale Park, Evesham, Worcestershire, WR11 1GP