



Karndean  
Designflooring



Macgochans

Hospitality & Leisure  
case study

# The brief

Overlooking the picturesque Tobermory harbour on the Island of Mull, Macgochans restaurant and bar showcases the best of Inner Hebridean hospitality and is popular with the local community and holidaymakers alike.

Following a devastating fire in spring 2019, owner Neil Morrison asked Dominic Paul of IBDP Commercial Interior Design to restore and update the building so that it could rise phoenix-like from the ashes to regain its place as the vibrant hub of Tobermory.



**Sector:** Hospitality and Leisure

**Client:** Macgochans

**Designer:** IBDP Commercial Interior Design

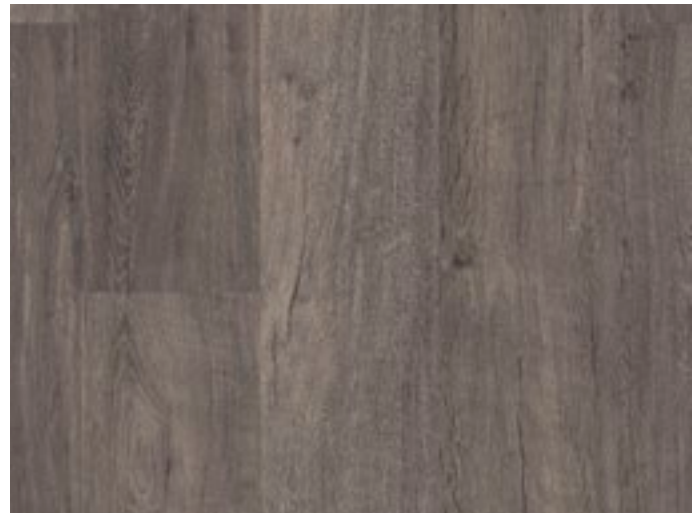
**Flooring Contractor:** Neil Clark Flooring Services and Gary McIvor Flooring

**Area:** 243m<sup>2</sup>

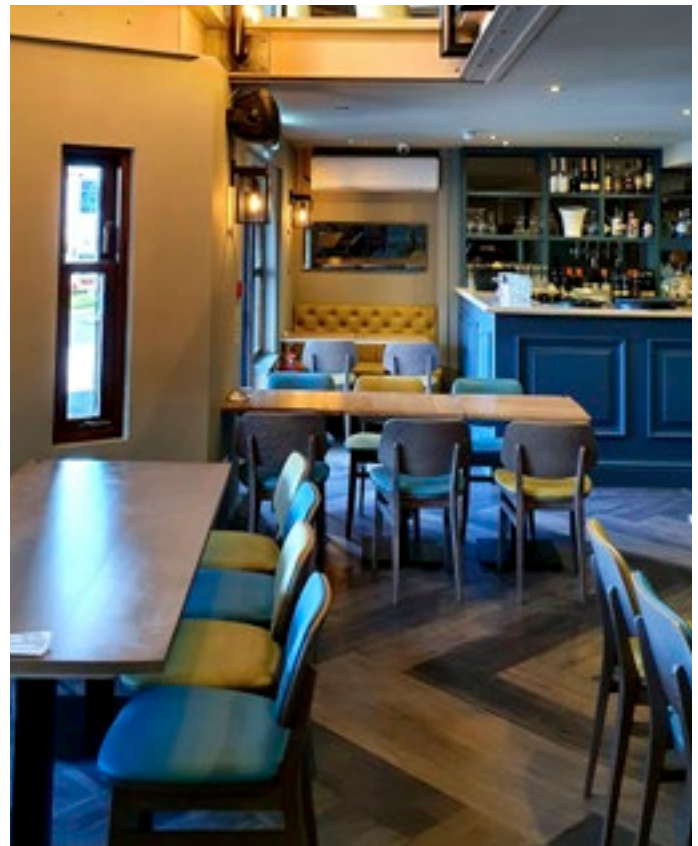
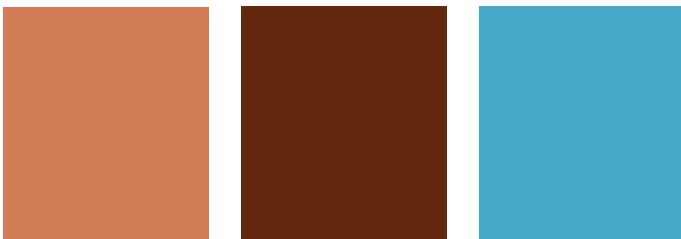
**Photographer:** Colin Morrison



■ Twilight Oak LLP301



■ Raven Oak LLP302



## The concept

The building started life as a fisherman's cottage so Neil was keen to retain its Scottish charm with original features such as its stone walls and fireplaces but also to create a modern interior that would appeal to a young family audience.

The new interior design creates a visual separation between the cosy bar area and the more contemporary restaurant space yet retains a sense of continuity with fresh natural materials and a neutral yet interesting colour palette. Opening up a double height atrium and building a new glass balcony on the upper floor has flooded the restaurant area with natural daylight.

# The look

The new two-storey restaurant features a contemporary take on traditional style with an airy colour scheme in off-white, duck egg blue and ochre. Painted panelling on the walls and bar bring the interior bang up-to-date while curved leather deep-buttoned banquettes in warm ochre link the modern look to the building's historic past.

In the upper storey, the structural metalwork has been left exposed and paired with industrial style feature lighting. Using two complementary LooseLay designs - Twilight Oak and Raven Oak - a random pattern herringbone floor balances the industrial starkness with warm wood tones and natural textures.

Meanwhile, in the bar area a more traditional look complements the exposed stone walls with dark wood panelling and classic brown leather seating, highlighted with copper and brass light fittings.

Owner Neil Morrison explained: "We have used Karndean products in the past so we knew that the product would fit well with the space and could be used on both wooden and concrete flooring bases. It can get very busy here at times and surfaces take a bit of abuse so the loose lay option appealed to us as it's easy to clean and small sections can be replaced if required.

"The new Macgochans is much lighter and cleaner than the previous rough wood style and the practical surfaces mean that we can easily comply with Covid social distancing and cleaning requirements."

Products used: ■ Twilight Oak **LLP301**, Raven Oak **LLP302**



■ Twilight Oak **LLP301** | Raven Oak **LLP302**



■ Twilight Oak LLP301 | Raven Oak LLP302







■ Twilight Oak LLP301 | Raven Oak LLP302

# Products specified:

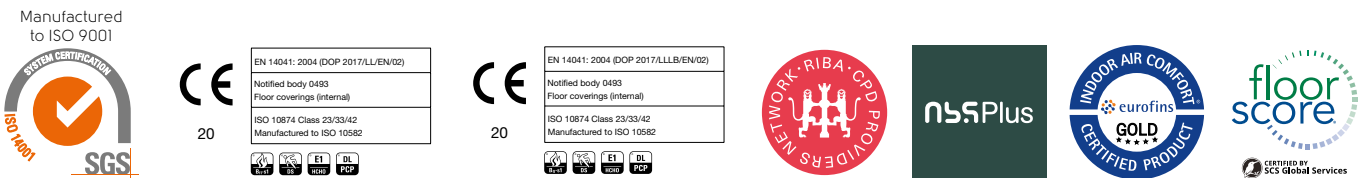


## LooseLay Longboard

	Standard	LooseLay Longboard Result
 <b>Size</b>	EN ISO 24342	1500 mm x 250 mm**
 <b>Thickness</b>	EN ISO 24346	4.5 mm
 <b>Wear layer</b>	EN ISO 24340	0.55 mm
<b>Guarantee</b>	Light industrial Commercial Residential	15 years* 15 years* Lifetime guarantee*
 <b>Bevelled edge</b>		No

\* Subject to terms. Please speak to your Commercial Specification Manager for more information.

\*\* Sizes based on standard plank size. Products specified have been cut to a bespoke size.



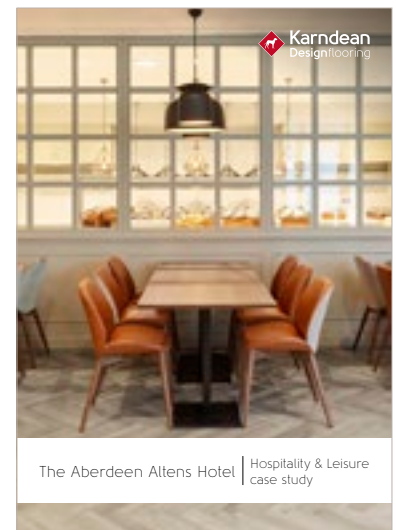
To view the full technical specification for each of our product ranges visit our website:

[karndean.com/commercialtechdata](http://karndean.com/commercialtechdata)



## View our Hospitality case study, The Aberdeen Altens Hotel:

The Aberdeen Altens Hotel is the perfect base for exploring the beautiful Scottish Highlands and east coast. The owners appointed architect and design consultants ICA to design a flexible open plan restaurant and bar area that would reflect the beauty and history of the locality and offer a high quality dining experience for discerning hotel guests as well as local residents and businesses.



The Aberdeen Altens Hotel | Hospitality & Leisure case study

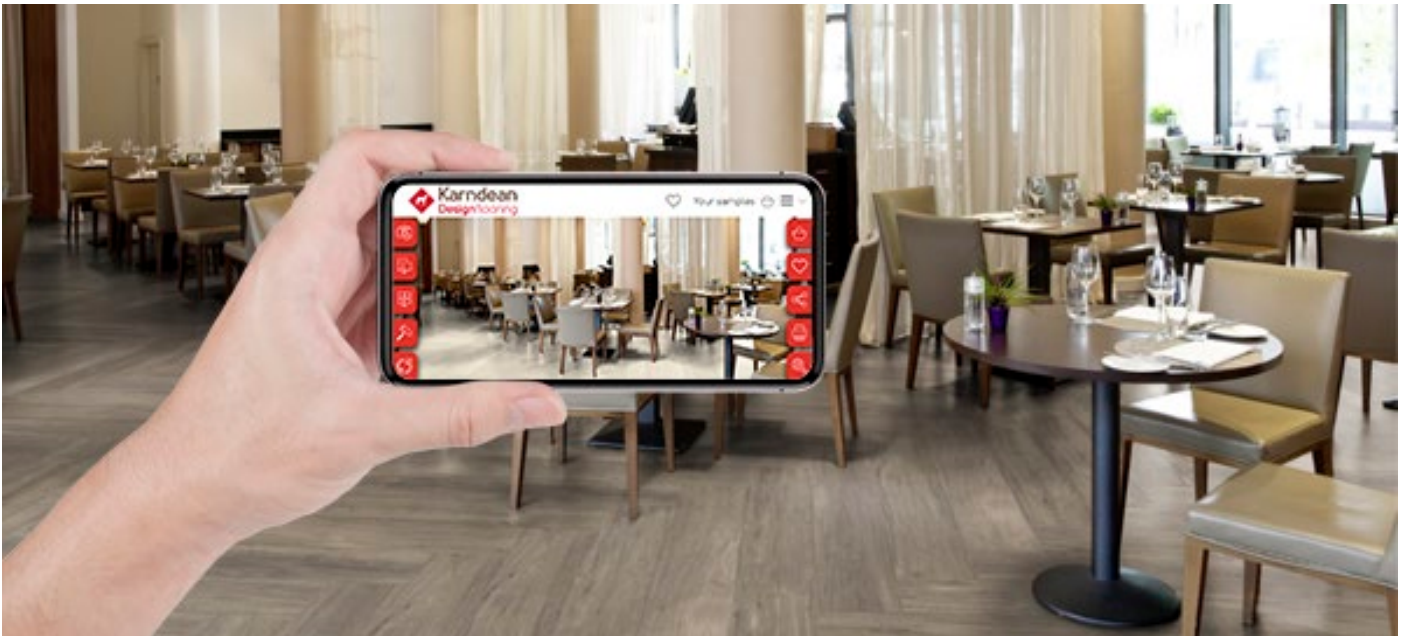
# Feeling inspired?

We have a variety of tools available to help you achieve the look you desire for your project:

## Commercial floorstyle

Check out our interactive room viewer, Floorstyle. Play around with different floor designs, laying patterns and design features using either our examples of typical commercial settings or upload a photo of a project you're currently working on to choose a floor to suit.

[karndean.com/commercialfloorstyle](http://karndean.com/commercialfloorstyle)



## Commercial brochure

Showcasing photography spanning all sectors, our commercial brochure is a comprehensive guide to all of the products we offer.

[karndean.com/commercialbrochure](http://karndean.com/commercialbrochure)



Keep up to date

Follow, Like and Subscribe

