

---

**Extreme spec**  
Self-supporting stone  
spiral stair  
08



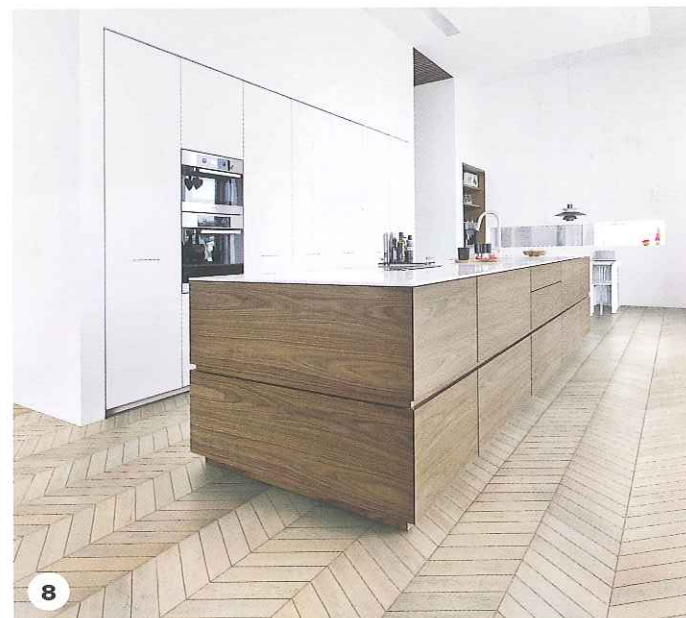


**5**  
**Rubber floorcovering system**  
**Nora**

Who is the lady in red ascending the scarlet ladder? Why, it's Nora with her rubber flooring surface, rising up the russet runway at Ropemaker Place in the City. The shiny stair treads are preshaped in one piece to prevent dirt absorption and make this climbing crimson corridor easy to clean without the need for any extra sealant coatings. The floor coverings from the Norament range are also said to be quick to install, slip-resistant and comfortable to walk on. They come in other colours too – although as far as Nora is concerned it's red or dead. [nora.com](http://nora.com)

**6**  
**Parquet effect flooring**  
**Karndean**

Students at the University of Worcester may have noticed that free education has been replaced by tuition fees and grants by hefty student loans, while professional degrees guarantee them no more than years of debt and a career dealing with self-checkout snarl-ups at Asda. What they may not clock is that the 50-year-old parquet floor in their cafeteria has been replaced by Karndean's vinyl simulacrum, Auburn Oak Parquet. Whether that's a tribute to the product or the impact of large amounts of ever cheaper vodka on the student brain is hard to tell. [karndean.com](http://karndean.com)



**7**  
**Underfloor heating system**  
**Schlüter**

You can tell this kitchen isn't in the UK. Who in this country would store 30 bottles of wine in the kitchen unless for a party, and even then you'd probably dump them on the island under the halogen spots. No, it takes a cultured continental European to build up a 'cellar' where vintages can mature despite their proximity to the corkscrew. Also on tap in this Euro kitchen is a fast-delivery water-fed underfloor Beekotec-Therm heating system by German firm Schlüter, which claims it's 30% more energy efficient than a standard radiator. [bekotec-therm.co.uk](http://bekotec-therm.co.uk)

**8**  
**Patterned wood floors**  
**Kährs**

Looking at this picture, you might think the near right corner of the worktop is 50% larger than the nearside left and more than twice as big as the far right corner. But that would mean you'd somehow missed the revolution in perspective kicked off by Brunelleschi in 15th century Renaissance Florence, allowing flat images to replicate effects of binocular disparity. And, as you have also no doubt gleaned over the perspective of time reading this, the Kährs Chevron parquet-look planks are all the same size, just getting further away. [kahrs.com](http://kahrs.com)