

The Round Table  
sponsored by



Pages 56-59



## The cover

### The logo

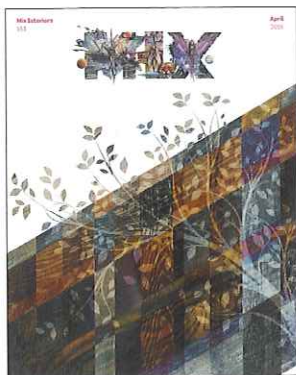
We've all got used to minimal, monochrome design – it's logical, it's acceptable and it's easy. Whether applied to a building or to an interior or simply to a magazine title – isn't it time for the romantic, colourful picturesque to tickle our fancy?

[www.lauriechetwood.com](http://www.lauriechetwood.com)  
[www.chetwoods.com](http://www.chetwoods.com)

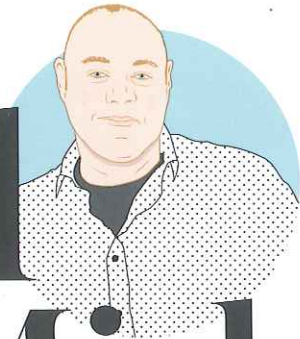
### The cover image

Inspired by nature and this month's roundtable on biophilia, Karndean Designflooring's cover interprets the 12 new Van Gogh Wood hue designs. Each replicating the unique look that comes from the transformation of wood over time, the four groups feature French Oaks, American Redwood, Scottish Beech and Mexican Cypress.

[www.karndean.com](http://www.karndean.com)



# A word from Mick



### It struck me, halfway through our recent

Round Table discussion on the subject of biophilic design, that it really can be the smallest, simplest things that make the greatest difference.

We were discussing the issue of planting in the workplace and one of our esteemed panel members recalled how her former studio had planted chilli peppers in the office – and how this had led to conversations between people who might not normally speak with one another. In other words, a 20p packet of seeds had helped improve interaction and collaboration.

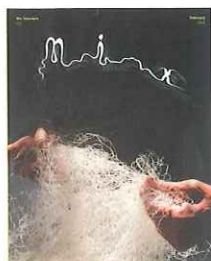
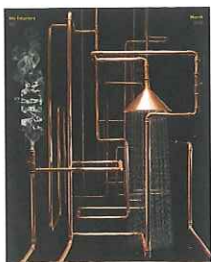
I still remember planting mustard cress seeds at junior school on a Friday afternoon – and the wide-eyed wonder of actual plants being there the following Monday. We were even given bread so that we could all have a

cress sandwich! So, I've decided to do bring a little bit of that wonder to my own working life. As a good deal of my work is done from home, the idea of improving interaction and collaboration is out of the window. However, speaking of windows, what I can do is plant a variety of herbs just outside the bay window. Through spring and summer (British weather permitting, of course) I'll be able to fling open the bay window and breathe in the incredible aroma of fresh thyme, rosemary and coriander.

Actually, maybe that's not such a great idea. Even the thought of those smells has me reaching for takeaway menus. The planting of herbs might well lift my soul, but it's also likely to lift my cholesterol! When it comes to wellbeing, maybe its the Aladdin and China Garden takeaways that will benefit the most from my biophilic plans!

## Back issues

Contact us to buy back issues:  
[rebecca@mixinteriors.com](mailto:rebecca@mixinteriors.com)



## Get in touch

### Editor

Mick Jordan  
[mick@mixinteriors.com](mailto:mick@mixinteriors.com)

### Editorial support

Rebecca Bignell  
[rebecca@mixinteriors.com](mailto:rebecca@mixinteriors.com)

### Director

David Smalley  
[david@mixinteriors.com](mailto:david@mixinteriors.com)

### Designer

Rob Jozefowski  
[rob@mixinteriors.com](mailto:rob@mixinteriors.com)

### Managing director

Marcie Incarico  
[marcie@mixinteriors.com](mailto:marcie@mixinteriors.com)

### Founding publisher

Henry Pugh

### Address

Mix Media Limited  
 2 Abito  
 85 Greengate  
 Manchester  
 M3 7NA

### Telephone

0161 946 6262

### e-mail

[editorial@mixinteriors.com](mailto:editorial@mixinteriors.com)

### Website

[www.mixinteriors.com](http://www.mixinteriors.com)

### Twitter

@mixinteriors

### Contributors

Mark Eltringham  
 Steve Gale  
 Mark Sait

### Subscriptions

To ensure that a regular copy of Mix Interiors reaches your desk, please call 0161 946 6262 or e-mail:  
[sales@mixinteriors.com](mailto:sales@mixinteriors.com)

### Annual subscription charges

UK single £45.50,  
 UK corporate  
 (up to 5 individuals) £140,  
 Europe £135 (airmail),  
 Outside Europe £165 (airmail).

Printed by S&G Print  
 ISSN 1757-2371