



Karndean  
Designflooring

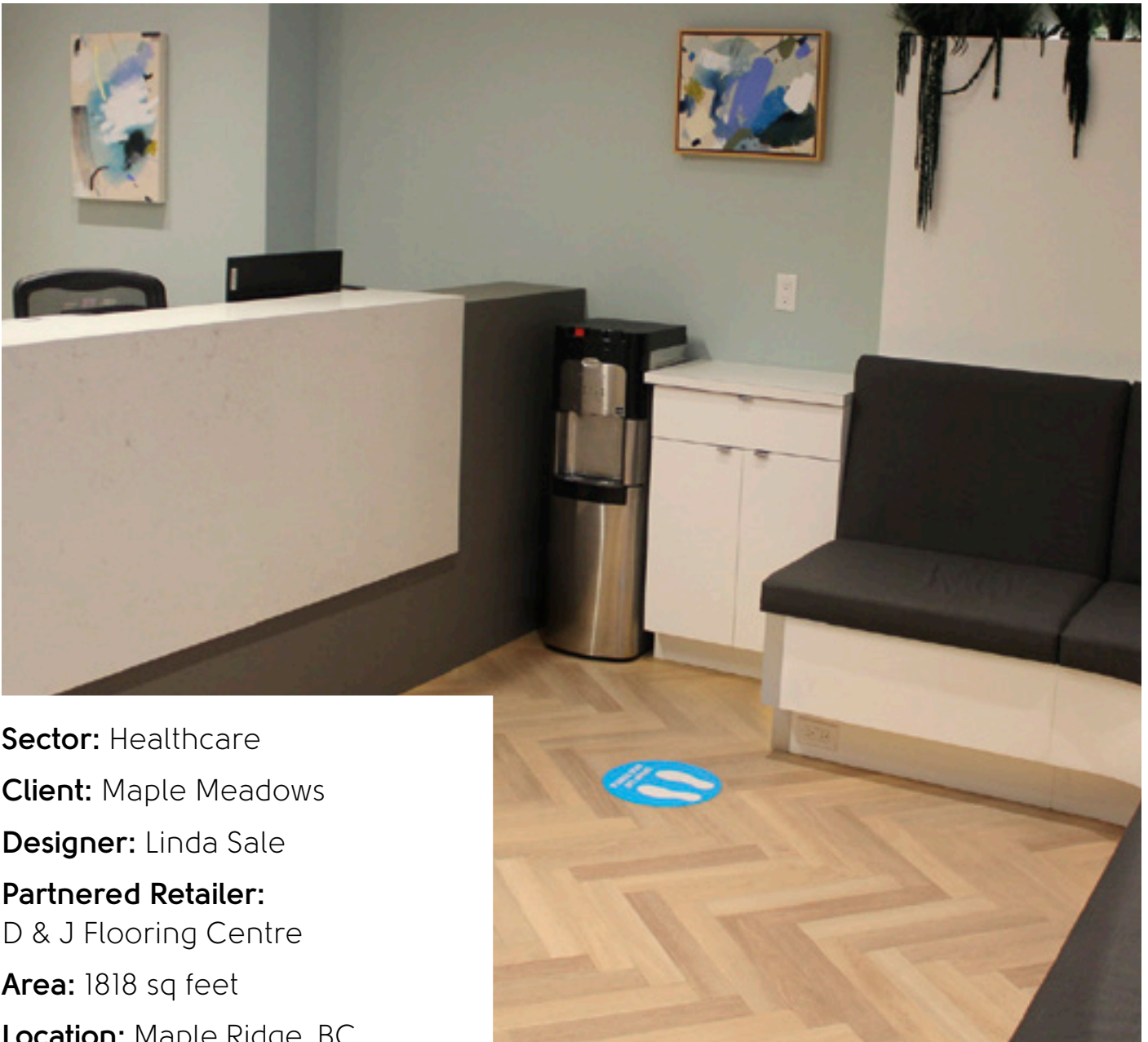


Maple Meadows Dental | Healthcare

# The brief

Located in Maple Ridge, BC, Maple Meadows Dental helps families achieve and maintain a healthy smile. With a knowledgeable and well-trained staff, the team at Maple Meadows makes sure the needs of their patients are put first.

Looking to revamp their dental office, the team at Maple Meadows turned to interior designer Linda Sale for expertise. Tasked with creating a space that was relaxing and welcoming, Linda turned to Karndean Designflooring for a solution: "Pleasing my clients is of utmost importance. I know I have chosen the right flooring when I show my clients Karndean products and they are absolutely blown away with how realistic the visuals are, so much so they are even considering putting it in their own home."



**Sector:** Healthcare

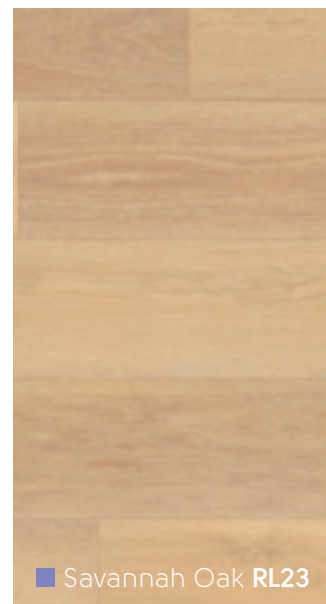
**Client:** Maple Meadows

**Designer:** Linda Sale

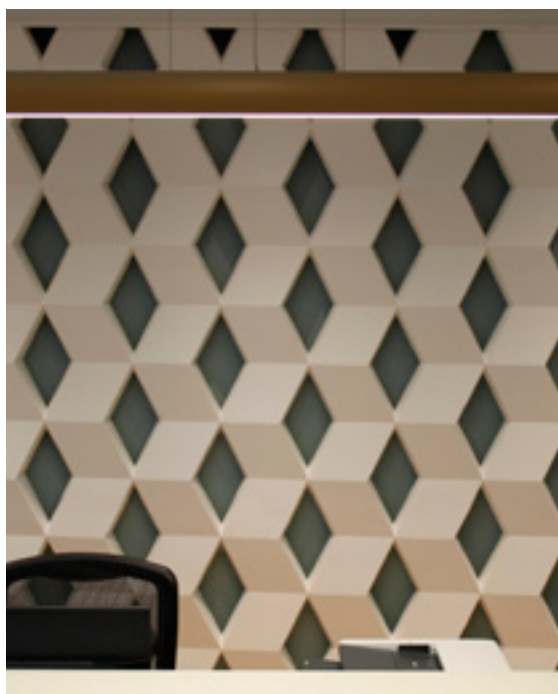
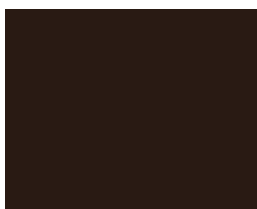
**Partnered Retailer:**  
D & J Flooring Centre

**Area:** 1818 sq feet

**Location:** Maple Ridge, BC



■ Savannah Oak RL23



## The concept

Linda and the team at Maple Meadows settled on Karndean's Savannah Oak visual in a full plank and parquet plank to achieve their ideal look: "My client and I were looking for a light, European oak floor that would tie in the other design elements of the space. Grey mill work was chosen for the counter tops, and white cabinets were installed throughout, and the light, soothing tone of Savannah Oak helped tie the entire space together," says Linda.

"I needed to present samples of flooring options to my client for approval while working on a short timeline. I contacted my Karndean sales representative, and with a prompt response, I got the samples I needed to quickly so I could adhere to the project timelines."

# The look

"Starting with flooring is incremental, as it lays the ground work for the overall design of a space.

When considering flooring options for my client, I was sure to look for a visual that embodied the Scandi style we were trying to achieve, while also being durable. Karndean flooring has a vast array of visuals to choose from, and I settled on presenting Art Select Savannah Oak to my client. The delustered appearance of this product gives it the authentic Scandi look I was hoping to achieve, while boasting a 20 year commercial warranty, so both myself and my client are comforted knowing the product will continue to perform and look great," says Linda.

"I wanted to create something unique for my client, and with Karndean's Savannah Oak visual available in both a large 56" x 9" and corresponding 18" x 3" parquet format I was able to do so. Incorporating the larger planks throughout the clinical area, and herringbone parquet in the office space, helped zone out different areas within the facility."

Product used: ■ Savannah Oak **RL23** | **SM-RL23**





# Products specified:



## Art Select

	Standard	Result
Size		56" x 9"   18" x 3"
Thickness		3.0 mm (1/8")
Wear layer		0.7 mm (30 mil)
Guarantee	Commercial Residential	20 years* Lifetime*
Bevelled edge		Micro

\* Subject to terms.

Manufactured to ISO 9001

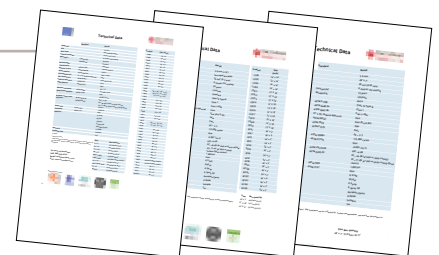


Savannah Oak RL23 with DS06 10mm design strip

## Technical information

To view the full technical specification for each of our product ranges visit our website:

[karndean.com/commercialtechdata](http://karndean.com/commercialtechdata)



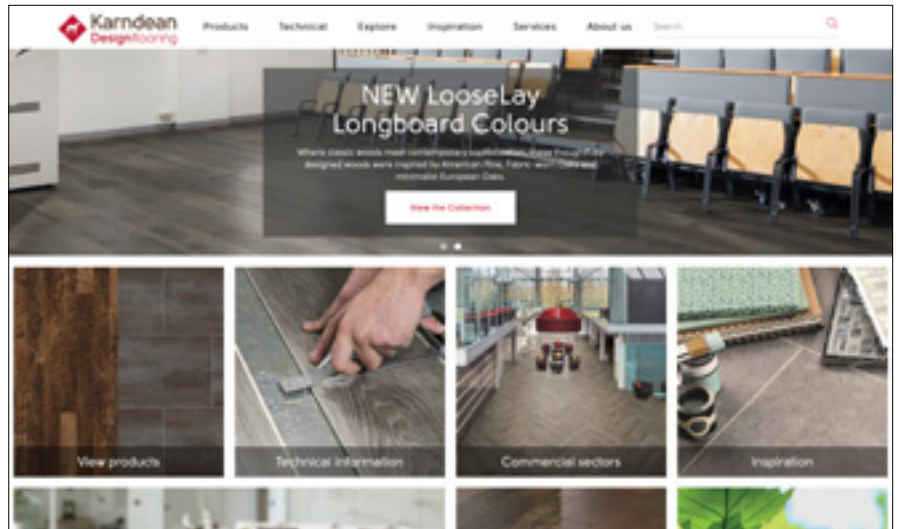
# Feeling inspired?

We have a variety of tools available to help you achieve the look you desire for your project:

## Commercial website

Our dedicated commercial website is the best resource to finding more information about our products, installation instructions and commercial services available to you.

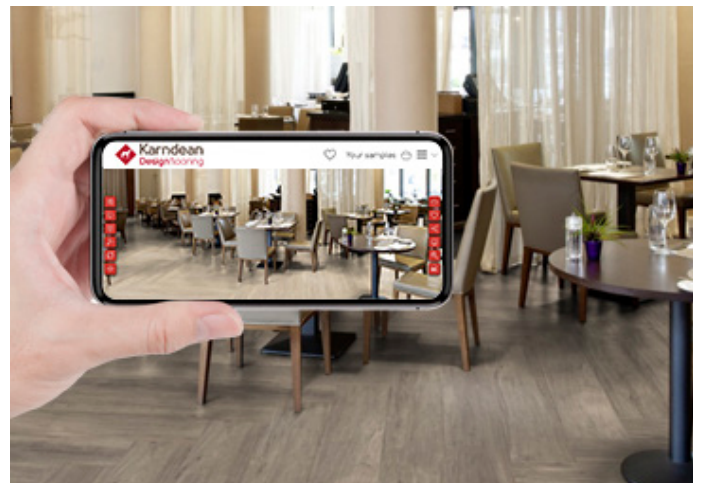
[karndean.com/commercial](http://karndean.com/commercial)



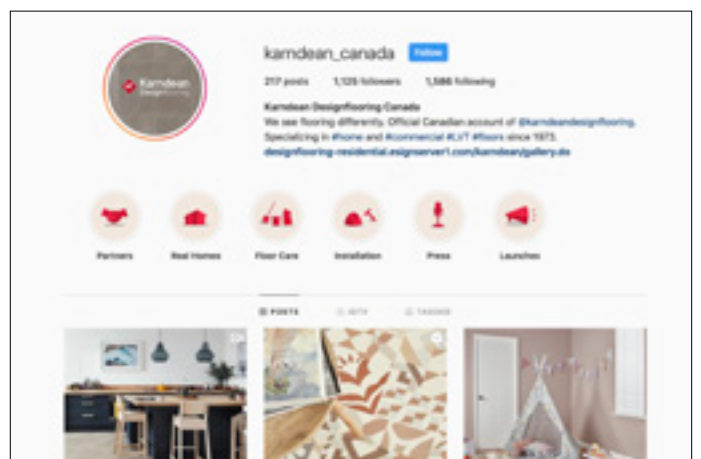
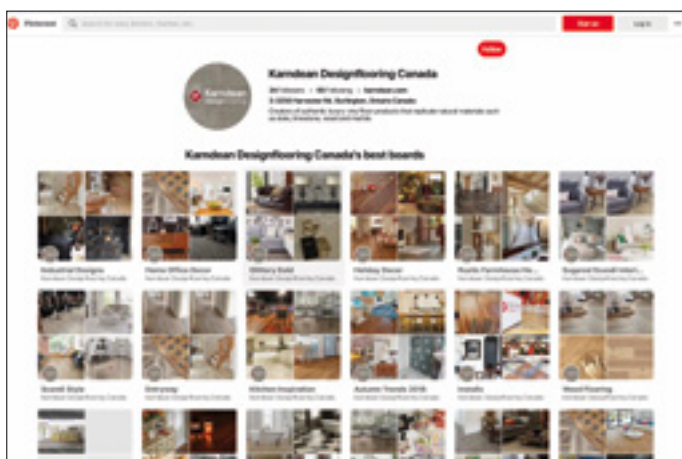
## Commercial floorstyle

Check out our interactive room viewer, Floorstyle. Play around with different floor designs, laying patterns and design features using either our examples of typical commercial settings or upload a photo of a project you're currently working on to choose a floor to suit.

[karndean.com/commercialfloorstyle](http://karndean.com/commercialfloorstyle)



## Keep up to date with us:



 Follow our boards on Pinterest [karndeanCAN](https://www.pinterest.com/karndeanCAN)

 Follow us on Instagram [karndean\\_canada](https://www.instagram.com/karndean_canada)

